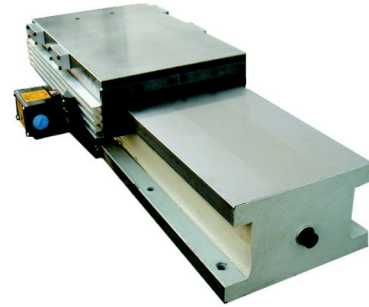


SLITTE DI AVANZAMENTO CON GUIDE RADENTI - SLIDE UNITS, BOX WAYS CONSTRUCTION
UNITES D'AVANCE AVEC GUIDAGE LISSE - VORSHUBSCHLITTEN -
MESAS DESPLAZABLES CON GUIAS TRATADA POR INDUCCIÓN

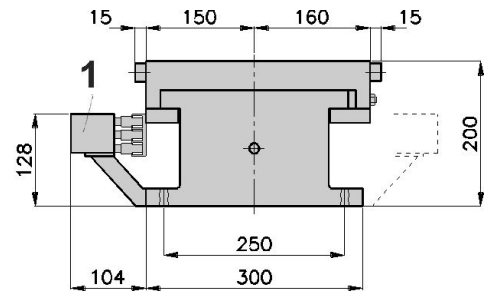
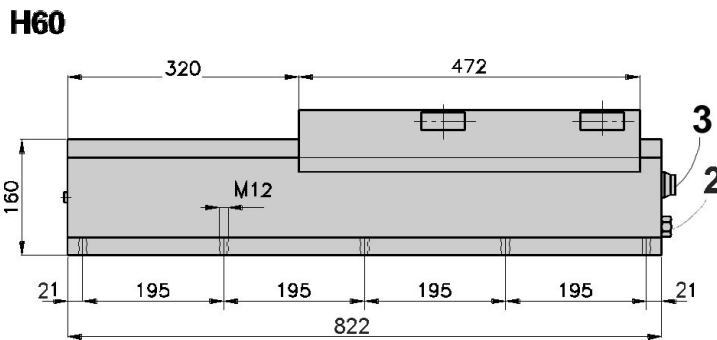
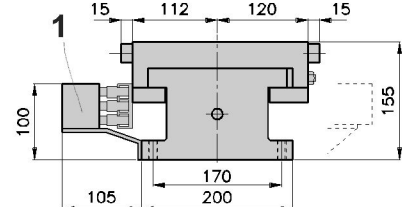
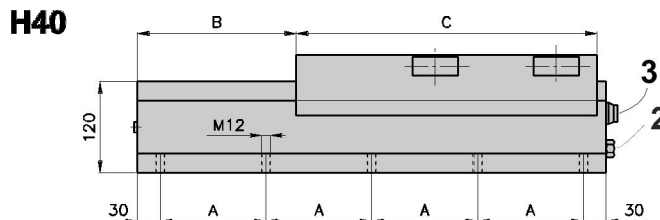
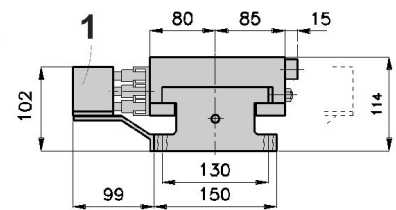
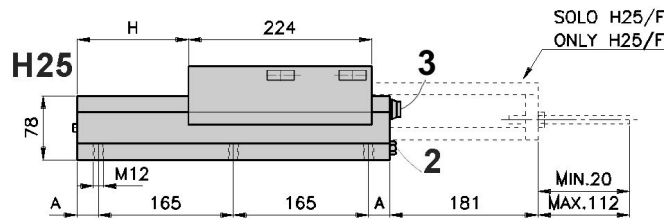
HYDRAULIC

ORDERING REFERENCES

H25/D



GRANDEZZA SIZE TAILLE BAUGRÖÖE TAMAÑO	CORSA STROKE COURSE VORSCHUB CARRERA	SPINTA STRENGHT POUSSEE SCHUBKRAFT EMPUJE	PESO WEIGHT POIDS GEWICHT PESO	A	B	C	H
	mm	35 bar	kg~	mm	mm	mm	mm
H25/D	120	5900N	30	26	-	-	136
H25/E	200		31	106	-	-	296
H25/F	300		38	106	-	-	309
H40/E	200	9800N	77	140	210	398	-
H40/F	300		100	190	310	398	-
H40/G	400		106	240	410	566	-
H60/F	300	17000N	191	-	-	-	-



1	Fine corsa elettrico a 3 contatti. Fino a 6 contatti a richiesta. Montato sul lato SX o DX.			3 position cam switch. Up to 6 contacts on request. Mounting on L.H. or R.H. side.			Boitier multicontact 3 pistes pouvant être monté à droit ou à gauche. (option jusqu'à 6 pistes).			Elektrischer Endschalter 3 Spuren rechts oder links montierbar. Bis zu 6 Spuren erhältlich.			Interruptores eléctricos 3 contactos. Hasta 6 contactos a solicitud. Montados sobre el lado izquierdo o derecho.			
2	H25	H40	H60	H25	H40	H60	H25	H40	H60	H25	H40	H60	H25	H40	H60	
	Cilindro idraulico	ø50	ø63	ø80	Hydraulic cylinder	ø50	ø63	ø80	Vérin hydraulique	ø50	ø63	ø80	Hydraul. Zylinder	ø50	ø63	ø80
	Raccordi G	1/4	3/8	3/8	ports G	1/4	3/8	3/8	raccordements G	1/4	3/8	3/8	Ölanschluss G	1/4	3/8	3/8
	Sez.andata cm²	17,1	25,0	38,9	Forw. area. cm²	17,1	25,0	38,9	Section aller cm²	17,1	25,0	38,9	Ringfläche	cm²	17,1	25,0
	Sez.ritorno cm²	19,6	31,1	50,2	Retract area cm²	19,6	31,1	50,2	Sect. retour cm²	19,6	31,1	50,2	Vorschub cm²	17,1	25,0	38,9
	Cilindro a richiesta ø	---	80	100	Cylinder on request ø	---	80	100	Vérin sur demande ø	---	80	100	Rückhub cm²	19,6	31,1	50,2
													Zylinder auf Anfrage ø	---	80	100
3	Battuta meccanica fine corsa avanti			Advance mechanical stop			Butée mecanique avant			Mechanischem Endanschlag			Parada mecanica de final de trabajo			
	Colore Grigio RAL 7038			Color grey RAL 7038			Couleur gris RAL 7038			Farbe hellgrau RAL 7038			Color gris RAL 7038			